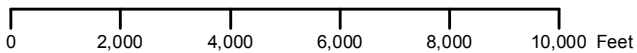
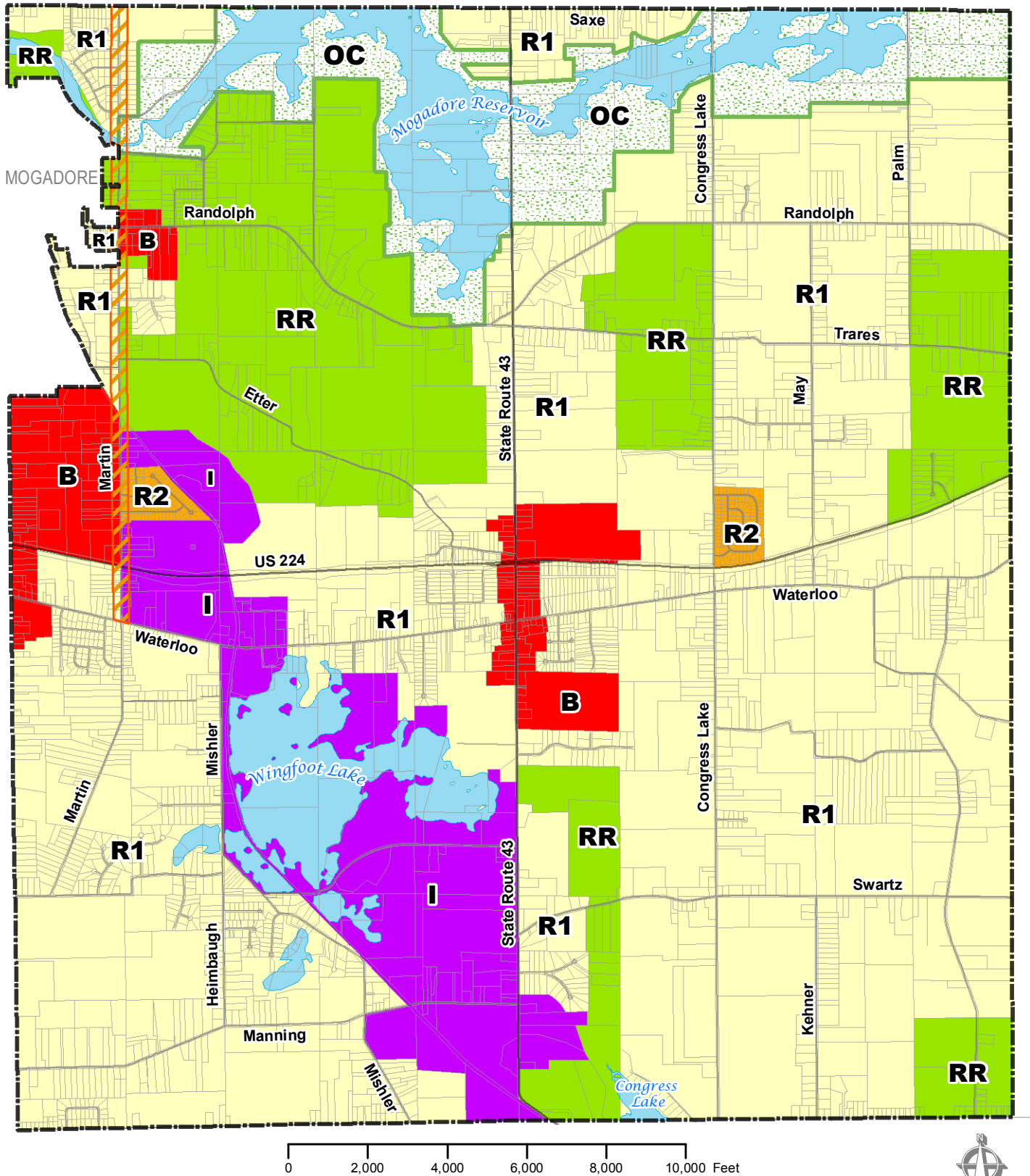


# Suffield Township Zoning Districts



- O-C - Open Space Conservation
- RR - Rural Residential
- R1 -Low Density Residential
- R2 - Urban Residential
- B - Business
- I - Industrial
- Residential Business Overlay  
(Overlay District for properties with frontage on this portion of Martin Road)
- Parcels (2013)

**Adopted: Suffield Twp. Trustees Resolution 8-7-07A**

Source: Parcels, roads - Portage County GIS, January 2013.